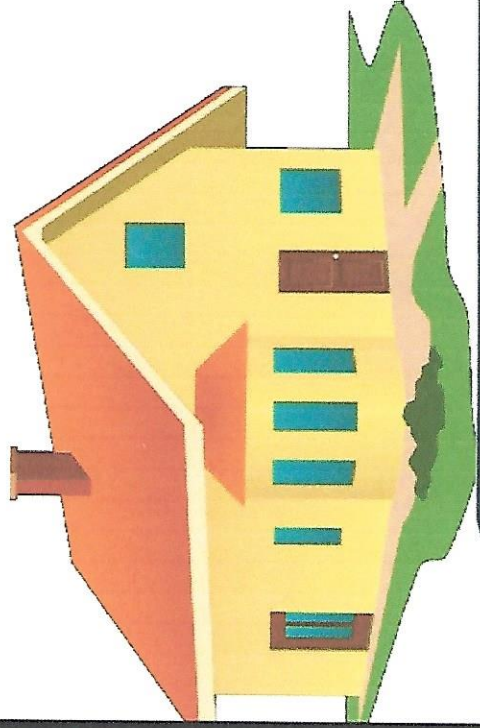


Taxable valuations for each entity are determined by the County Auditor.



Lake County
General Health District
Public Health
Prevent • Promote • Protect

Subdivision	2017	% Change
Concord Township	\$638,739,030	1.61%
Leroy Township	\$114,828,870	19.20%
Madison Township	\$297,109,480	1.08%
Painesville Township	\$362,832,390	0.65%
Perry Township	\$155,581,210	-0.25%
Fairport Harbor Village	\$49,853,790	0.19%
Grand River Village	\$10,773,460	0.61%
Kirtland Hills Village	\$48,682,670	0.81%
Lakeline Village	\$6,036,360	-0.87%
Madison Village	\$63,972,400	1.67%
North Perry Village	\$186,315,500	-21.41%
Perry Village	\$33,713,790	0.67%
Timberlake Village	\$15,033,330	0.03%
Waite Hill Village	\$42,677,380	-0.47%
Eastlake City	\$421,603,250	-5.91%
Kirtland City	\$245,991,250	0.43%
Mentor City	\$1,433,707,840	-0.12%
Mentor on the Lake City	\$128,425,780	-0.07%
Painesville City	\$222,787,360	0.69%
Wickliffe City	\$278,432,960	0.14%
Willoughby City	\$595,402,120	1.30%
Willoughby Hills City	\$249,547,980	1.04%
Willowick City	\$247,348,820	0.29%