

## Fire Extinguisher Training



## Purpose for Training

- To make people aware of how fire extinguishers work.
- To make people aware that sometimes it is better that they **do not use** an extinguisher.
- What people should do when they choose to use an extinguisher.
- How to report a fire emergency.

## You are **NOT** required to use a fire extinguisher on a fire.

- *Remember*, you are not a trained firefighter.
- You should never put your life in danger.
- Use the Fire Extinguisher if you feel comfortable and have been trained.

## Your responsibilities in a fire emergency are to:

- ✓ Recognize a fire emergency.
- ✓ Activate the fire alarm system.
- ✓ Evacuate the building.
- ✓ Call 911 to report the fire and to ensure help is on the way.

## Recognize a Fire Emergency



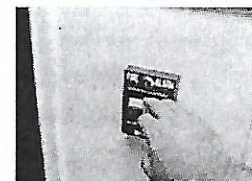
Do you see smoke?

Do you smell smoke?

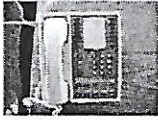
Do you see flames?

## Activate the Fire Alarm

- ✓ Pull the nearest Fire Alarm to start the evacuation of the building.

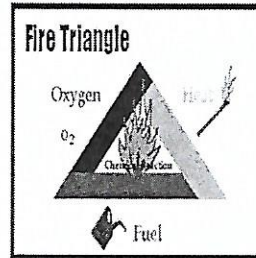


## Dial 911 or 943-1234



- Call 911 to make sure help is on the way.
- If you use a telephone the call will be received by the Wickliffe Police.
- If you use a cell phone the call will be answered by a Lake or Cuyahoga County Dispatcher. Be specific with information.

## How Does a Fire Work?



Three components

- Oxygen
- Heat
- Fuel

All three components needed to start a fire.

Fire extinguishers remove one or more of the components.

## Types of Fires



- **Class A** - Wood, paper, cloth

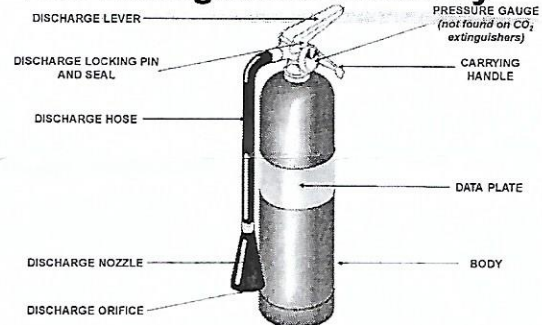


- **Class B** - Flammable liquids (oil, gas, grease)



- **Class C** - Electric equipment

## Fire Extinguisher Anatomy

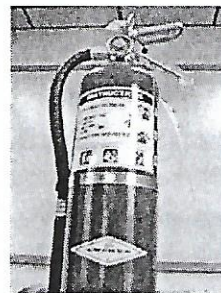


## Different Kinds of Extinguishers

Common types of fire extinguishers:

- A. Pressurized Water (wood, paper, trash)
- A, B, C Multi-Purpose Dry Chemical
- C. Carbon Dioxide (electrical)

**ABC (Multi-purpose)** is a very common type of commercial fire extinguisher



**To Operate an Extinguisher remember  
P.A.S.S.**

P = Pull the pin.

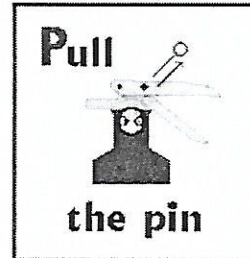
A = Aim the nozzle at the base of the fire.

S = Squeeze the handle.

S = Sweep from side to side.

The PASS Method will work on all types of fire extinguishers.

**P.A.S.S. Method**



**Pull the pin**

This will allow you to squeeze the handle in order to discharge the extinguisher

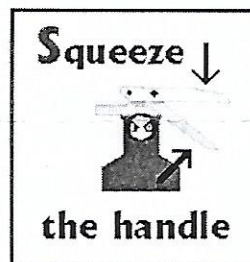
**P.A.S.S. Method**



**Aim at the base of the fire**

- Aiming at the middle will do no good.
- The agent will pass through the flames.

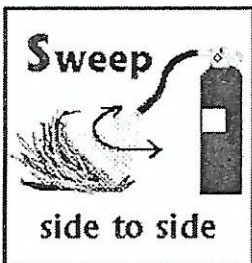
**P.A.S.S. Method**



**Squeeze the handle**

- ✓ This will release the pressurized extinguishing agent

**P.A.S.S. Method**



**Sweep side to side**

- ✓ Spray the extinguisher at the base of the fire.
- ✓ Cover the entire area that is on fire. Continue until fire is extinguished. Keep an eye on the area for re-ignition.
- ✓ Use again if needed.

**Safety Precautions when using an Extinguisher**

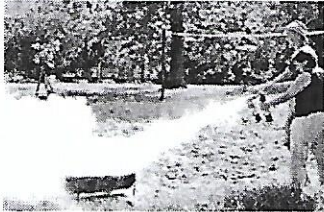


- Stay upwind of the fire.
- Stay low, never try to work over top the fire.
- Maintain a safe distance.
- Stand in an area of safety.



### Safety Precautions when using an Extinguisher

- Spray the extinguisher at the base of the fire.

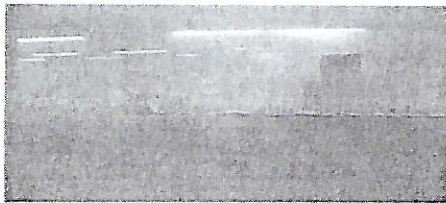


### Safety Precautions when using an Extinguisher



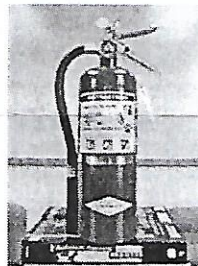
- Never allow the fire to get between you and your escape route.

### Safety Precautions when using an Extinguisher



Never go into a unknown area to fight a fire.

### Make sure your extinguishers are ready for an emergency.



- ✓ The extinguisher should be mounted on the wall.
- ✓ The area in front of the extinguisher shall be clear. No obstructions
- ✓ The pressure gauge should be in the green zone
- ✓ The inspection tag should show that the extinguisher has been inspected within the last year.

**THANK YOU... *be safe***



### Fire Extinguisher Training

Questions?