



CONCORD TOWNSHIP  
FIRE DEPARTMENT  
STATION #2



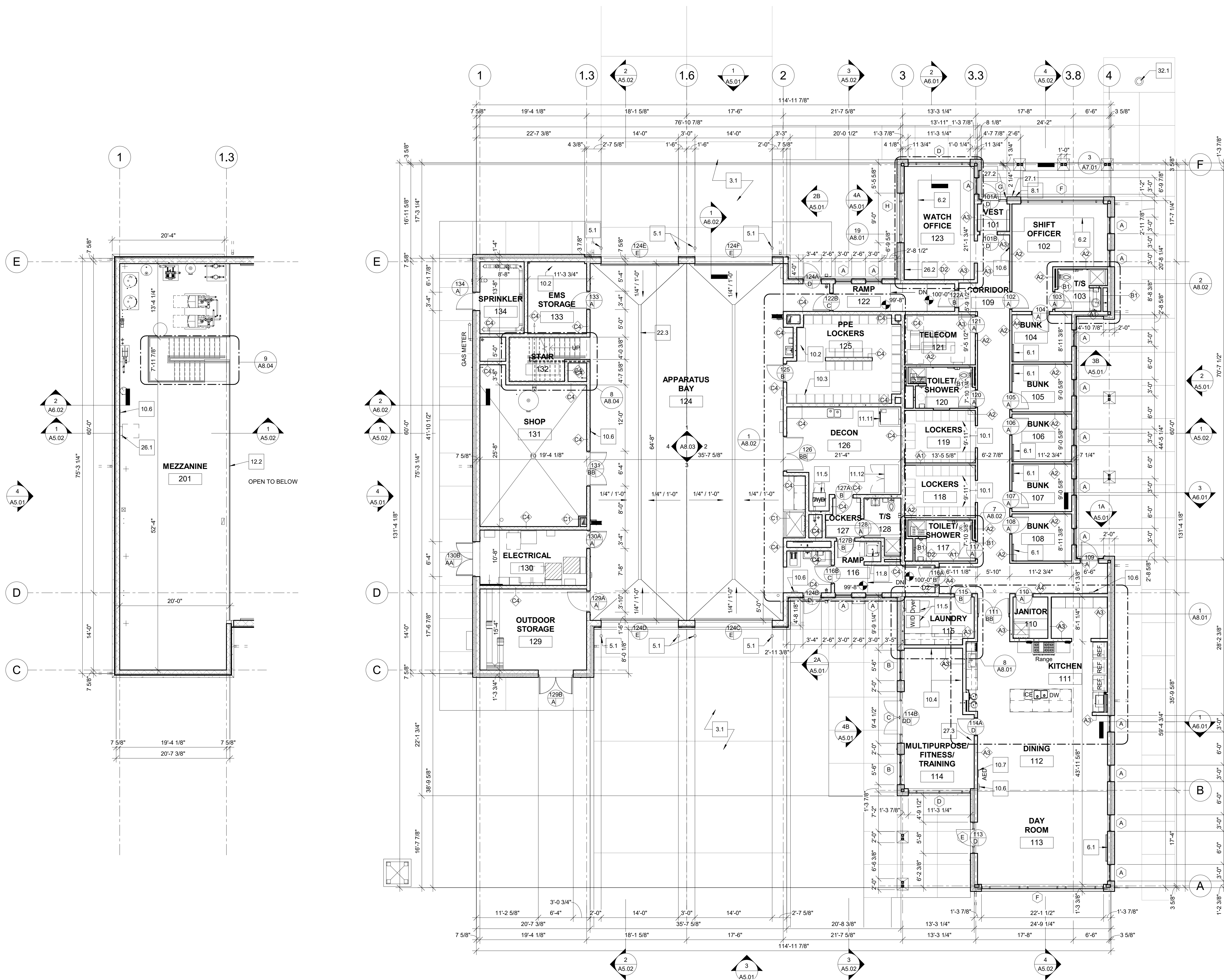
SEAL	
DATE OF RECORD	
ISSUE	08/09/2021

FIRST AND  
MEZZANINE  
FLOOR PLANS

A3.01

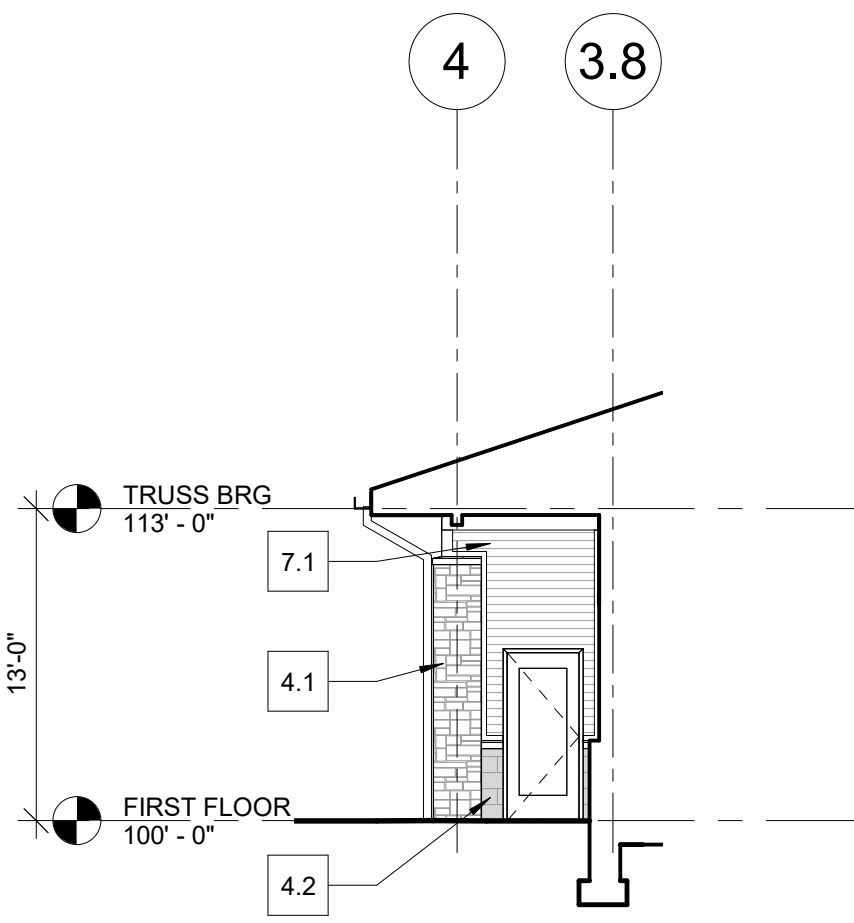
FLOOR PLAN NOTES	
<b>GENERAL NOTES:</b>	
1.	ELEVATION 100'-0" = ??
2.	INTERIOR DIMENSIONS ARE TO FACE OF WALL FINISH U.N.O.
3.	EXTERIOR WALL DIMENSIONS TO EDGE OF SLAB U.N.O.
4.	ALL CORRIDOR AND LOBBY WALLS ARE TO 5/8" IMPACT RESISTANT GWB U.N.O.
5.	ALL WET AREAS ARE TO RECEIVE WATER RESISTANT GWB
	3/4" DEPRESSED SLAB (G.C. TO PROVIDE FULLY COORDINATED DRAWINGS WITH DIMENSION PRIOR TO COMMENCEMENT OF WORK

FLOOR PLAN KEYNOTES	
3.1	CONCRETE APRON, SEE CIVIL
5.1	6" DIA. GALVANIZED PAINTED STEEL BOLLARD, TYP. SEE DETAIL 3/A2.01
6.1	WALL MOUNTED TV BRACKET, NIC. GG TO PROVIDE BLOCKING, WALL BRACKET ASSEMBLY AND ALL NECESSARY CONDUITS, CABLE POWER, ETC. TO FULLY OPERATE TV
6.2	BUILT-IN SOLID SURFACE DESK WITH GROMMETS AND CABEL MGMT.
6.3	BUILT-IN QUARTZ COUNTER TOP WITH WOOD VENEER BASE CABINETS
6.4	BUILT-IN QUARTZ COUNTER TOP WITH WOOD VENEER WALL AND BASE CABINETS
6.5	BUILT-IN FULL HEIGHT WOOD VENEER WALL CABINETS
8.1	KEY LOCK BOX
10	SHELVES
10.1	18"Wx24"D METAL LOCKERS ON 4" CONCRETE BASE
10.2	METAL SHELVING UNITS 18" DEEP WITH ADJUSTABLE SHELVES
10.3	GEAR LOCKERS WITH DOORS
10.4	FULL HEIGHT MIRROR, CONT. PANELS, PROVIDE EQUAL SIZE PANELS, MAX. WIDTH 48"
10.5	5 TIER 12" X 12" METAL LOCKER ON 4" CONCRETE BASE
10.6	FIRE EXTINGUISHER CABINET
10.7	AED CABINET
11.1	RANGE AND OVEN
11.2	REFRIGERATOR
11.3	UNDER COUNTER DISH WASHER
11.4	COMMERCIAL HOOD, SEE PLUMBING
11.5	HEAVY DUTY FRONT LOAD WASHING MACHINE & DRYER, CW-1 & CD-1
11.6	MICROWAVE
11.7	STACKED WASHER & DRYER
11.8	COMMERCIAL ICE MAKER, SEE PLUMB
11.9	COUNTERTOP COFFEE MACHINE
11.10	TRASH BIN
11.11	COMMERCIAL WASHER/EXTRACTOR
11.12	GEAR DRYER
11.13	UNDER-COUNTER COMMERCIAL ICE MAKER, SEE PLUMB
11.14	GEAR DRYER
12.1	STAINLESS STEEL BASE CABINET AND COUNTERTOP
12.2	GUARDRAIL
12.3	STAINLESS STEEL COUNTERTOP
22.3	TRENCH DRAIN, SEE PLUMBING
22.5	H/LOW DRINKING FOUNTAIN W/ BOTTLE FILLER, SEE PLUMBING
22.6	UTILITY SINK - SEE PLUMBING
22.7	BUILT-IN MOP SINK
26.1	M/O PANELBOARD, SEE ELECTRICAL
26.2	REMOTE GENERATOR ANNUNCIATOR PANEL
27.1	EMERGENCY CALL BOX (Viking E-1600A OR SIMILAR)
27.2	DOOR BELL WITH REMOTE UNLOCK FEATURE
27.3	PANIC BUTTON FOR MEDICAL EMERGENCY, TIE TO ALERTING SYSTEM TO PROVIDE AUDIBLE ANNOUNCEMENT.
32.1	26" TALL ALUMINUM FLAG POLE WITH HALYARDS AND POLE-MOUNTED ILLUMINATION. FOUNDATION PER FLAG POLE MANUFACTURER'S RECOMMENDATIONS

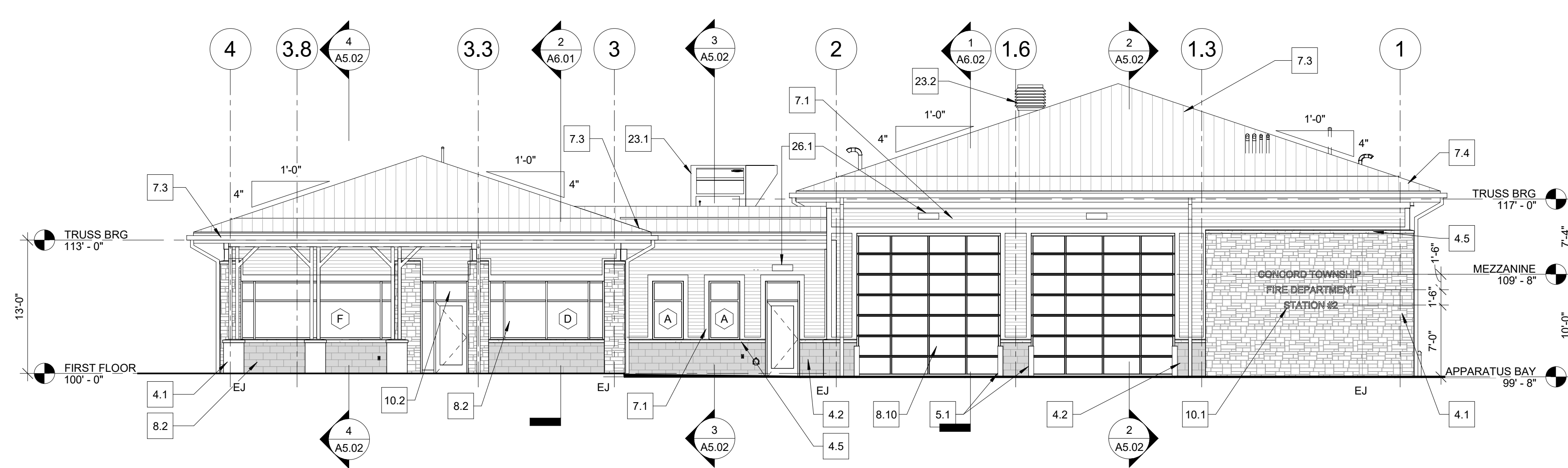


2 MEZZANINE FLOOR PLAN  
A3.01 1/8" = 1'-0"

1 FIRST FLOOR PLAN  
A3.01 1/8" = 1'-0"



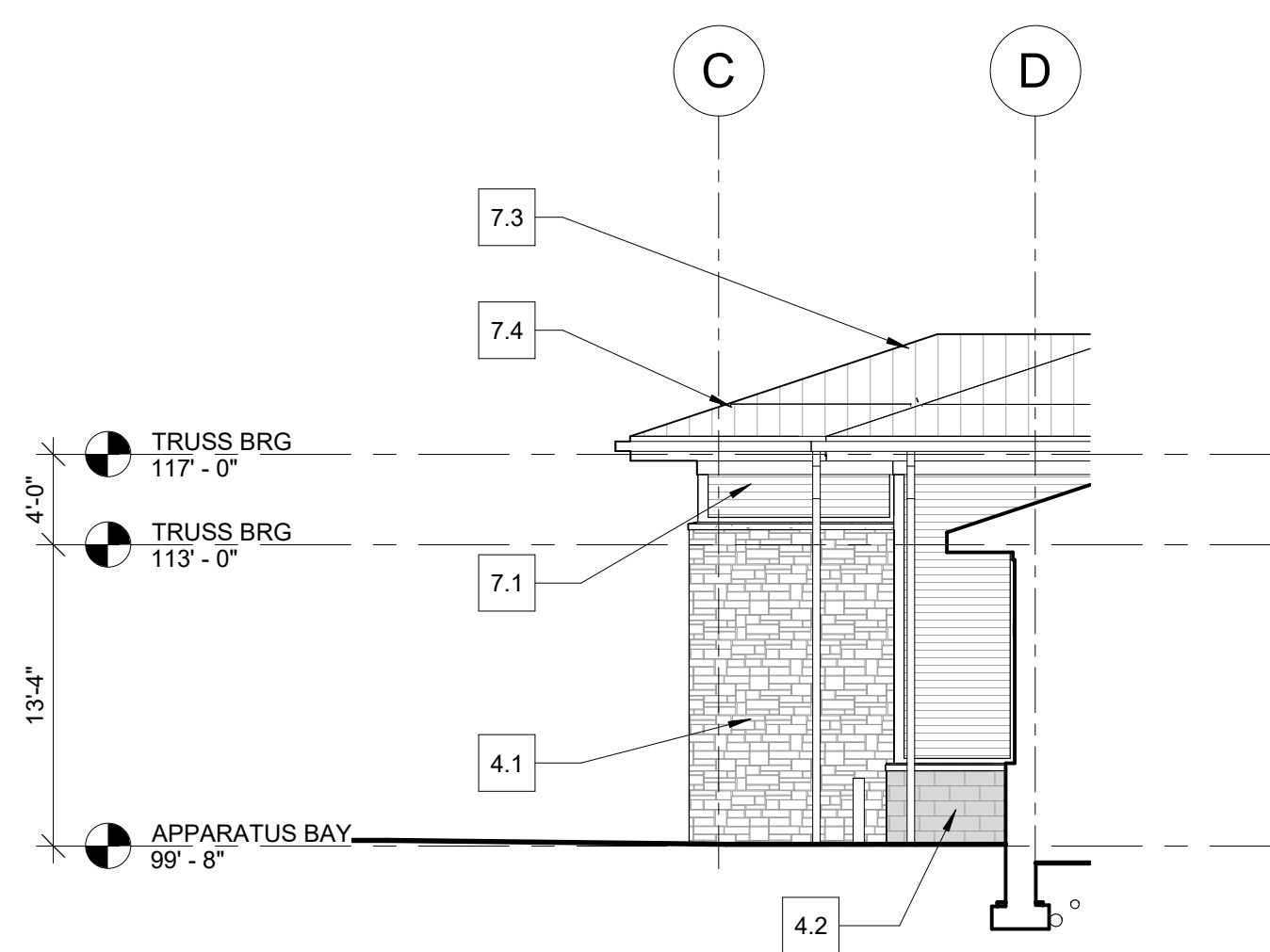
**1A PARTIAL NORTH ELEVATION**  
A5.01 1/8" = 1'-0"



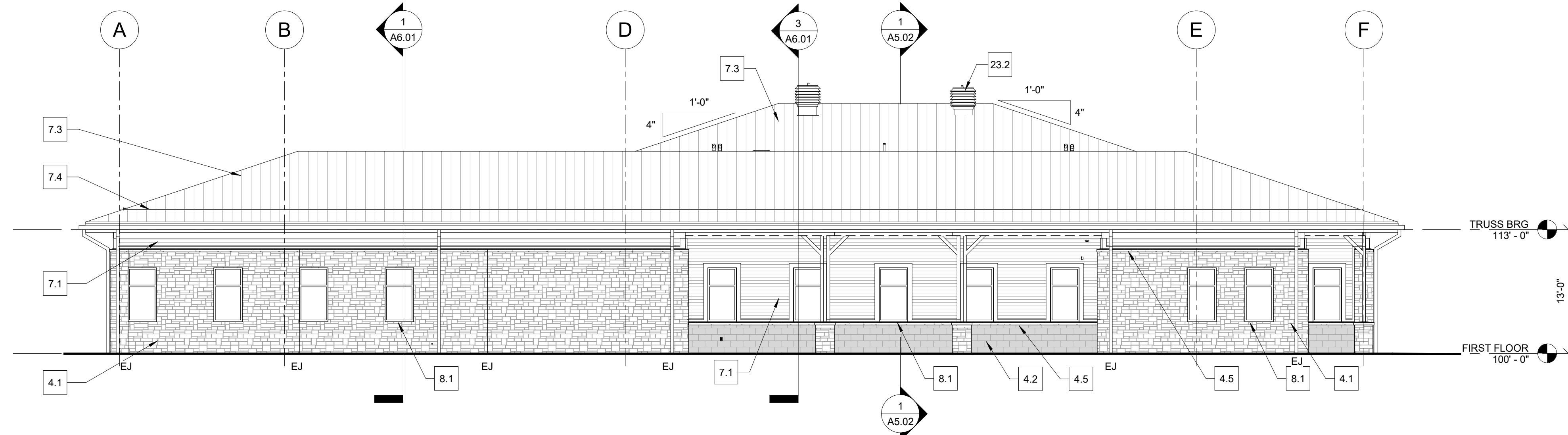
**1 NORTH ELEVATION**  
A5.01 1/8" = 1'-0"

ELEVATION KEYNOTES	
4.1	STONE VENEER (MS-1)
4.2	STONE VENEER (MS-2)
4.5	CAST STONE CAP
5.1	GALV. STEEL COLLARD, PTD. (TYP.)
5.5	ROOF ACCESS LADDER
7.1	FIBER CEMENT SIDING - 4" EXP.
7.2	GUTTER AND DOWNSPOUT
7.3	STANDING SEAM METAL ROOF
7.4	SNOW GUARD
8.1	ALUMINUM WINDOW
8.2	STOREFRONT
8.10	OVERHEAD DOOR
10.1	8" HIGH CAST ALUMINUM SIGNAGE
10.2	8" HIGH TRANSLUCENT WHITE VINYL ADDRESS NUMBER
22.1	GAS METER
23.1	ROOF TOP UNIT SEE MECHANICAL
23.2	MECHANICAL EXHAUST SEE MECHANICAL
23.3	LOUVER SEE MECHANICAL
26.1	LIGHT SEE ELECTRICAL
EJ	EXPANSION JOINT

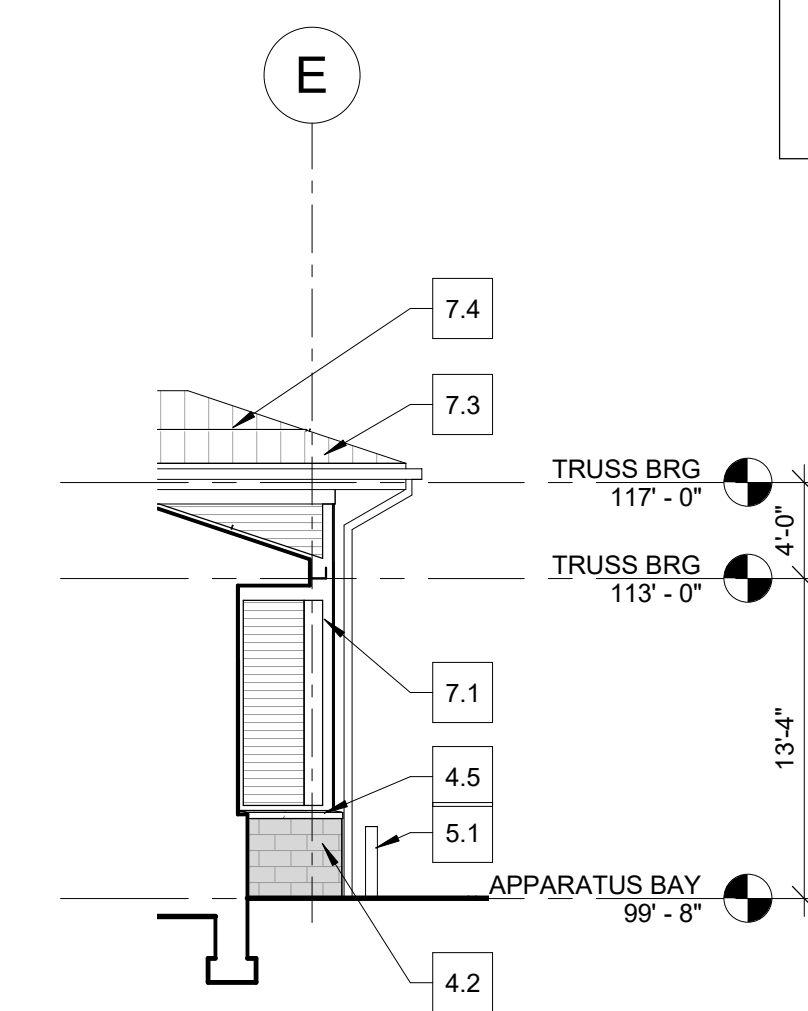
ELEVATION - MATERIAL LEGEND	
	METAL ROOF
	FIBER CEMENT SIDING - 6" EXP.
	STONE VENEER (MS-1)
	STONE VENEER (MS-2)



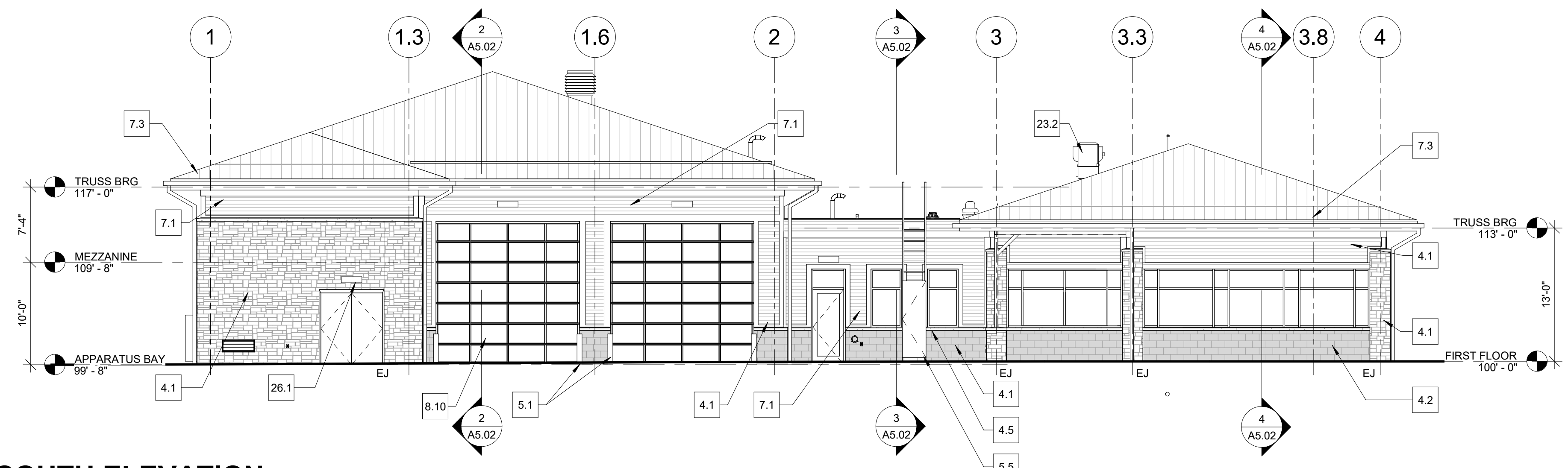
**2A EAST ELEVATION - PARTIAL SOUTH**  
A5.01 1/8" = 1'-0"



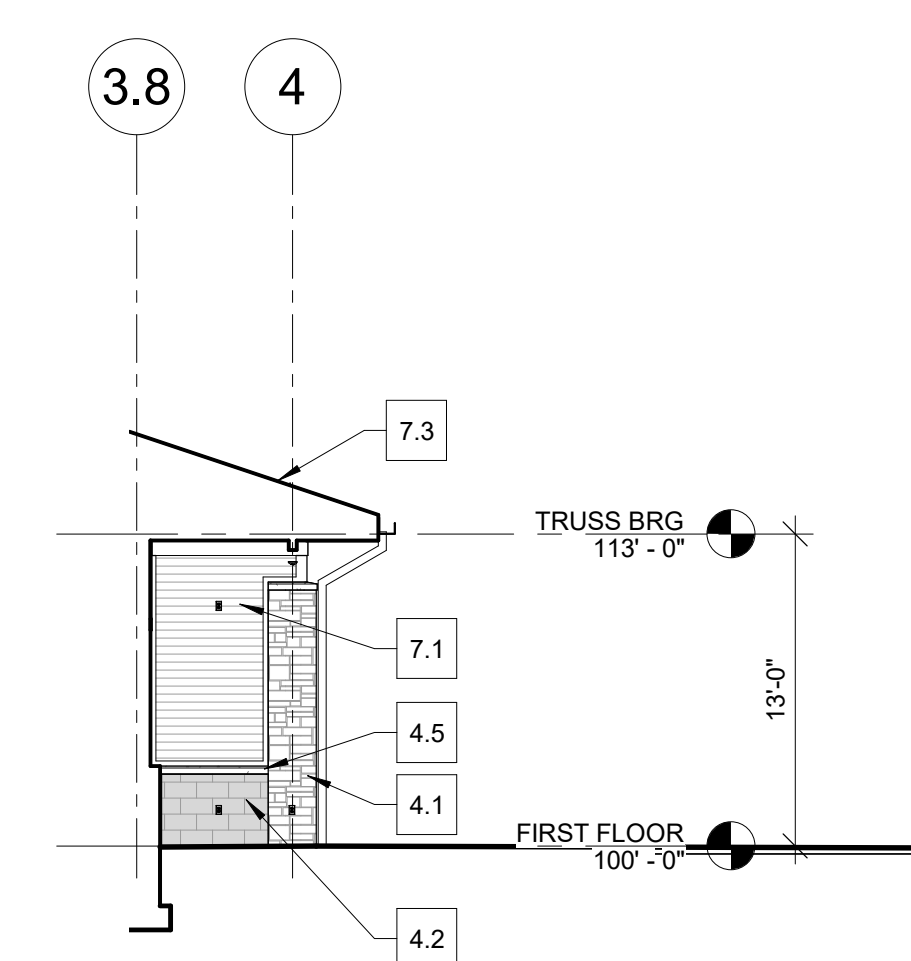
**2 EAST ELEVATION**  
A5.01 1/8" = 1'-0"



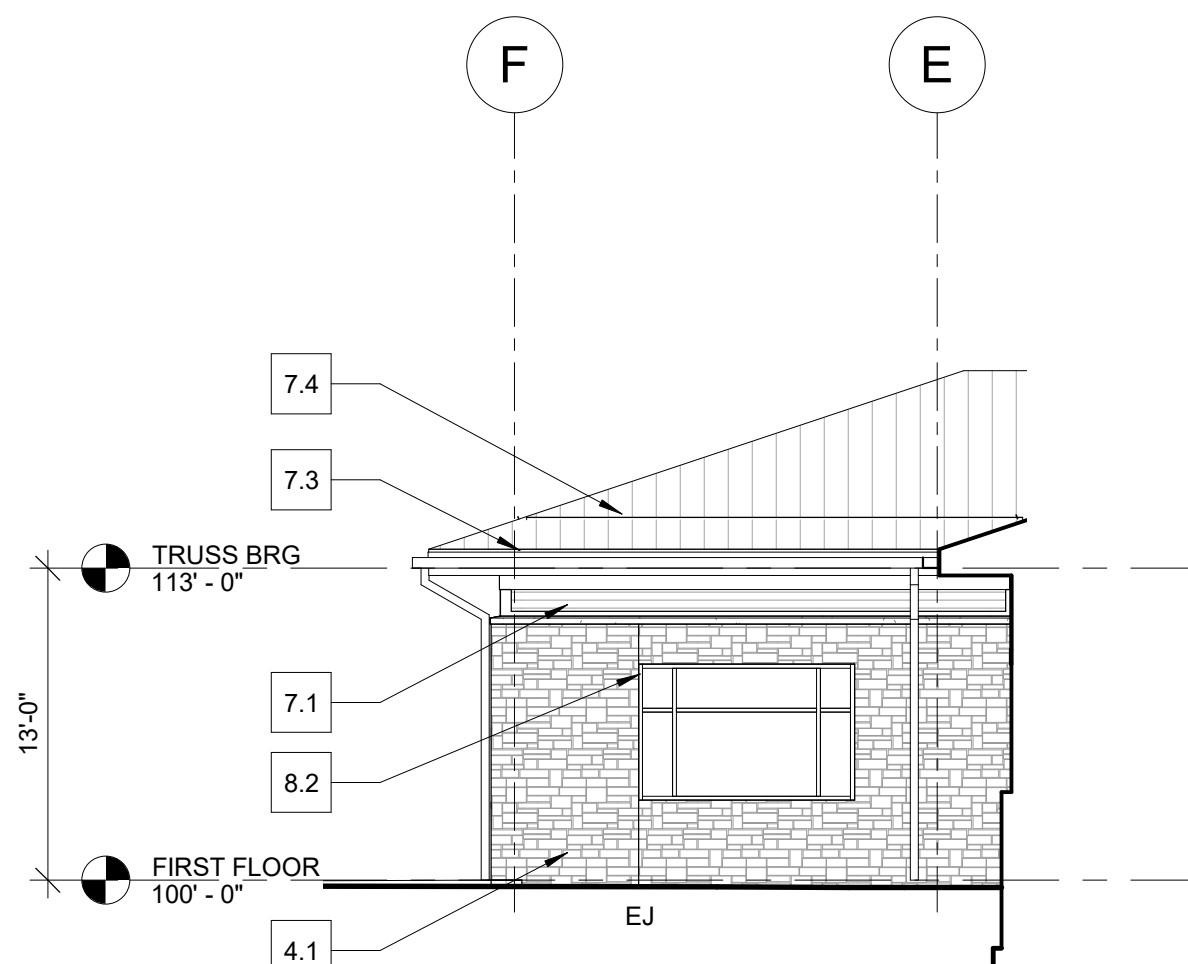
**2B PARTIAL EAST ELEVATION**  
A5.01 1/8" = 1'-0"



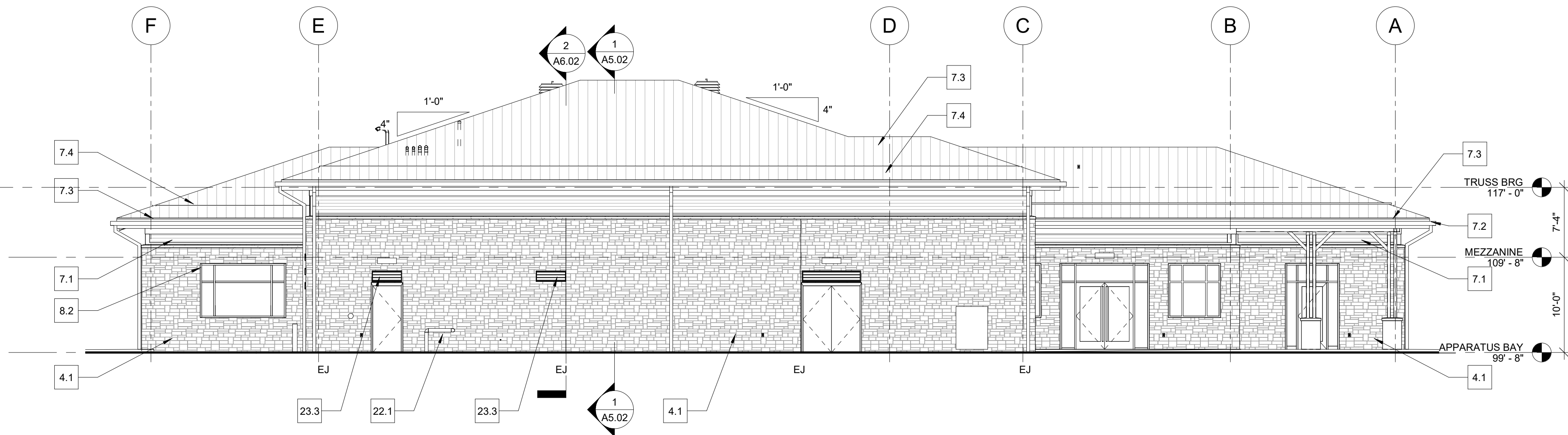
**3 SOUTH ELEVATION**  
A5.01 1/8" = 1'-0"



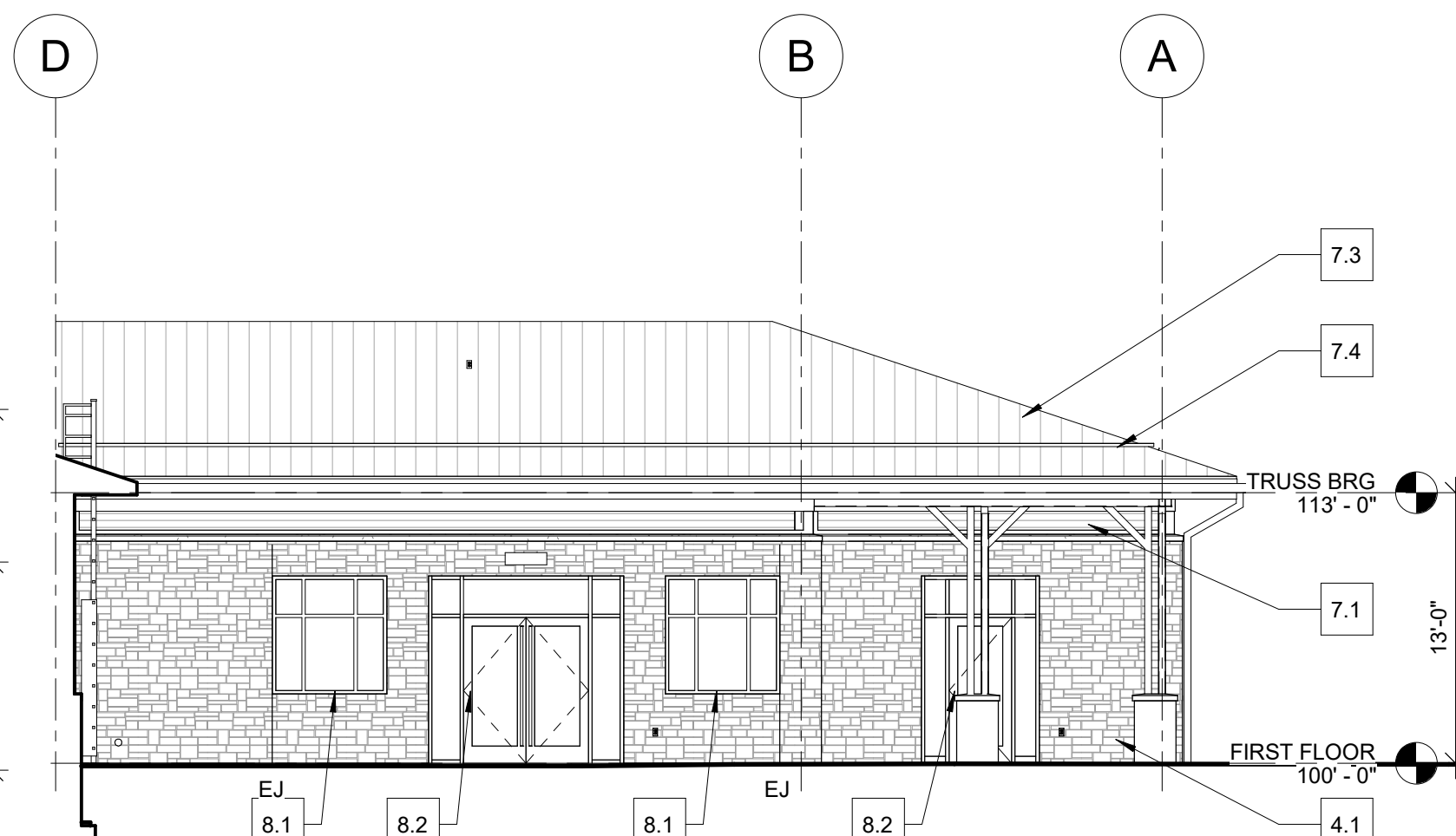
**3B PARTIAL SOUTH ELEVATION**  
A5.01 1/8" = 1'-0"



**4A PARTIAL WEST ELEVATION**  
A5.01 1/8" = 1'-0"

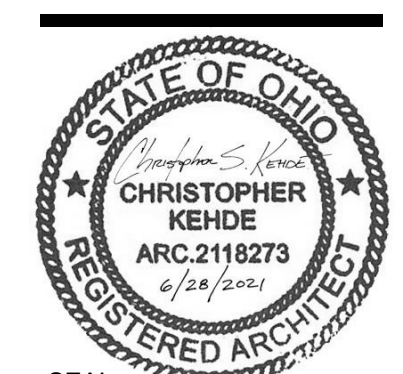


**4 WEST ELEVATION**  
A5.01 1/8" = 1'-0"



**4B PARTIAL WEST ELEVATION**  
A5.01 1/8" = 1'-0"

**CONCORD FIRE DEPARTMENT - STATION 2**  
10154 PROUTY RD  
CONCORD TWP, OH 44077



SEAL	
DATE OF RECORD	
BID ISSUE	08/09/21

BUILDING ELEVATIONS

**A5.01**